

7 Ton Equipment Full Bed Tilt Trailer



No ramps necessary!

Epoxy Ester Primer
w/Acrylic Finish

Sealed Factory
Wiring Harness

EZ Lube Hubs

Running Board
Front Steps



Full Bed Tilt
Power Up/Down

No Ramps
Necessary

Heavy Duty
Treadplate
Steel Fenders

7,000#
Dropleg
Jack

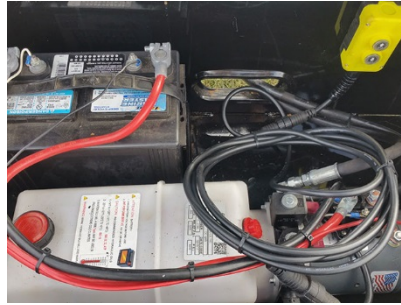


Johnson Trailer Co.

E7290 State Rd. 170
Colfax, WI 54730
715-962-3277

www.JohnsonTrailerCo.com





Trailer may be shown with optional equipment. Specifications subject to change without notice.

Specifications - 7 Ton Equipment Full Bed Tilt Trailer

Weight Rating: 14,000 LBS. GVWR w/evenly distributed load

Axles: 2 – 7,000# electric brakes, w/EZ-lube, safety breakaway w/charger

Suspension: 6 leaf slipper springs

Tires & Wheels: ST235/80 R16 load range E radial tires, 8x6.5 bolt pattern silver mod wheels

Fenders: 9"x72" 14 ga. treadplate teardrop w/stoneguard

Hitch: Adjustable 2 5/16" ball on pintle (14,000# rated), H.D. safety chains

Jack: 7,000# topwind, drop leg

Structural: 6" channel frame & tongue, 3" channel crossmembers (16" centers), special 1/8" treadplate tail section & running board steps

Tie Downs 14 stake pockets

Tilt: 12 volt electric hydraulic lift (power up & power down) w/12 volt deep cycle battery and remote

Electrical: LED lights, license bracket w/light, [sealed factory wiring harness](#) w/7 way connector, microprismatic reflective tape

Floor: 2 X 8 treated yellow pine decking

Paint: Phosphate etched pre-treatment with epoxy primer and acrylic finish

Colors Available: Black, Victory Red, Charcoal Metallic, Silver Metallic, Bright Blue Metallic, Emerald Green Metallic, Federal Yellow, Bright Safety Yellow, Safety Orange (Some custom colors - please call)